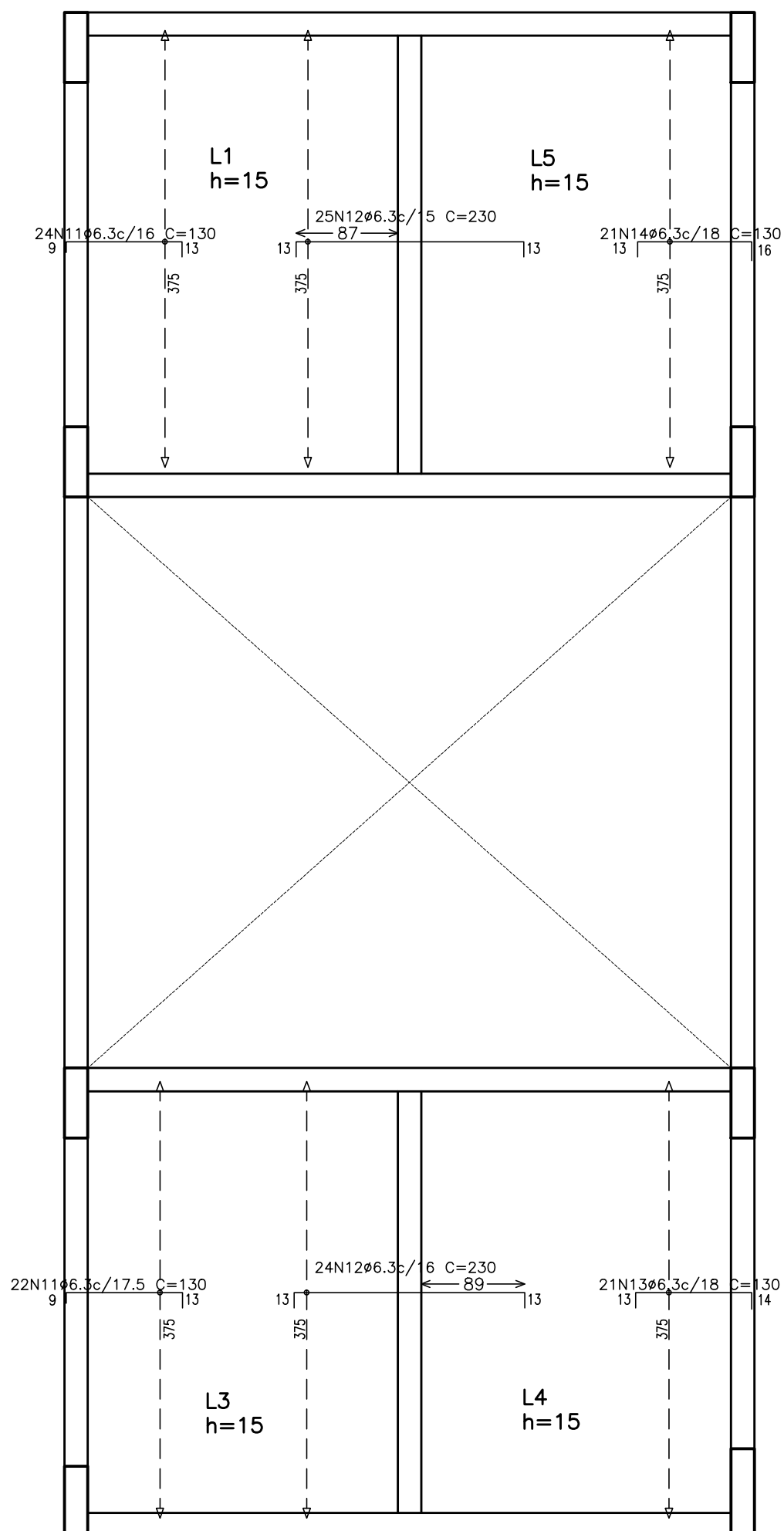
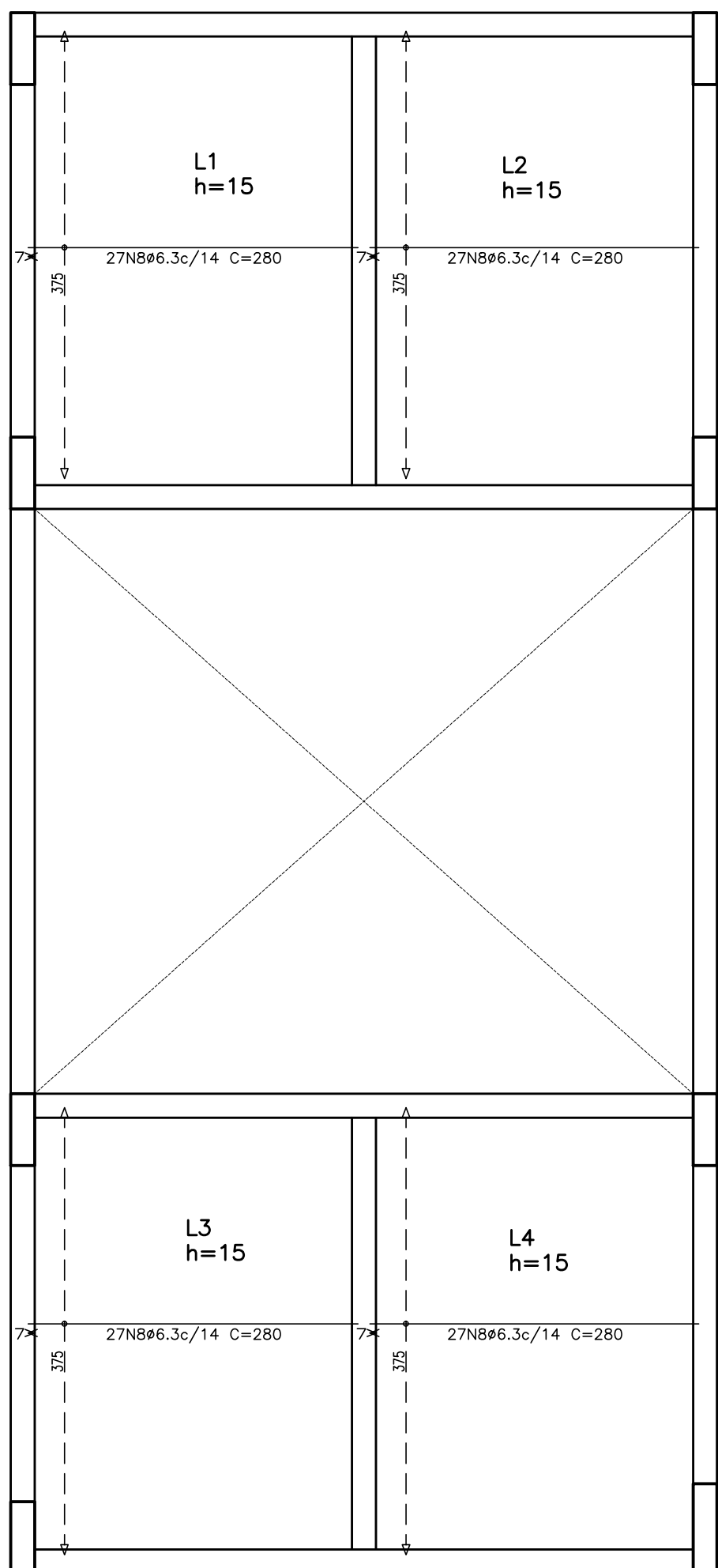


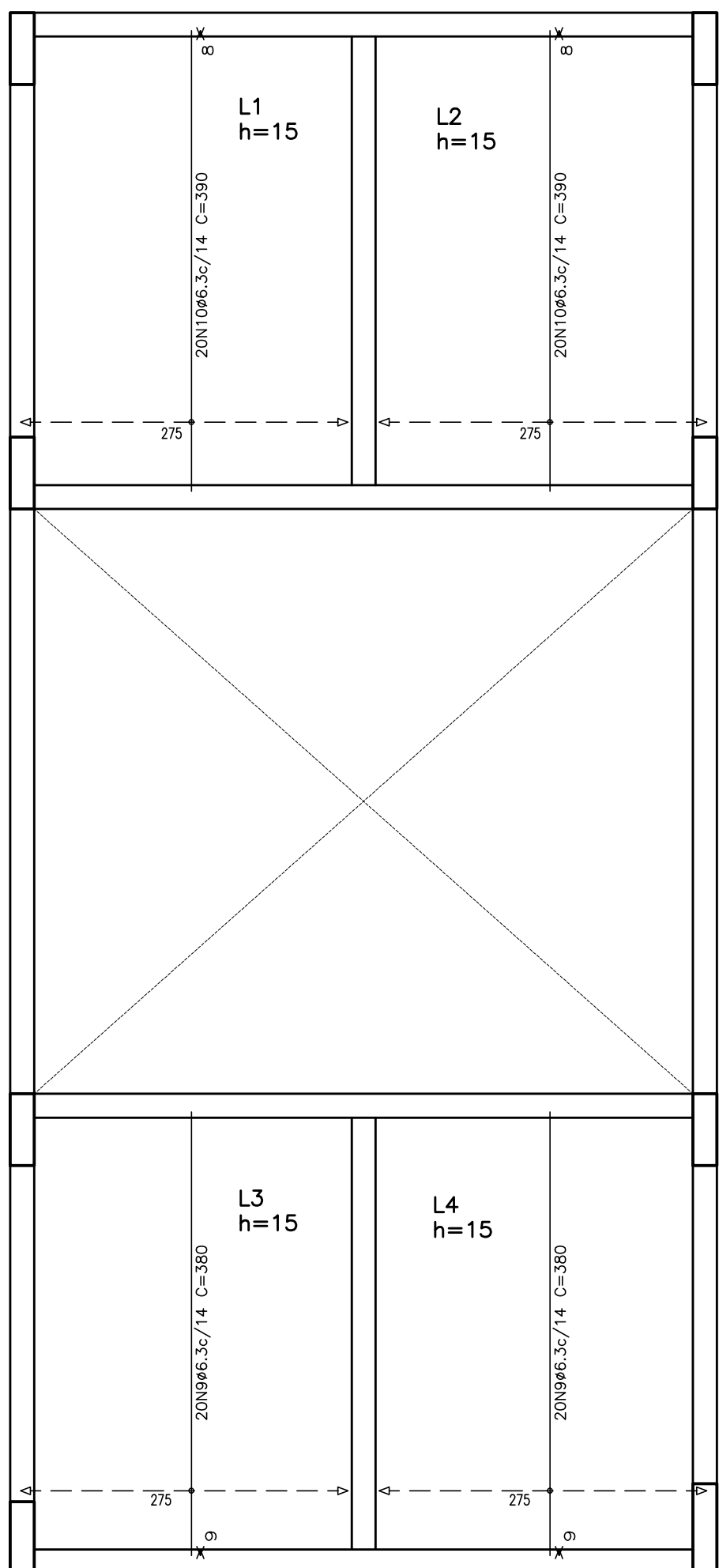
Elemento	Pos.	Diam. mm	Do mm	Reta Do	Comp. mm	Ala mm	ALA-60 mm	
P5	1	810	260	260	260	153	9.9	
	2	e5	20	152	152	504	4.8	
	3	e5	20	29	29	13	0.9	
				Total+10%			14.4	
P8	4	612.5	6	265	265	1590	15.6	
	5	e10	18	260	260	500	3.7	
	6	e5	20	153	153	300	4.8	
	7	e5	20	30	30	30	0.9	
				Total+10%			20.8	
Amoldura longitudinal inferior								
	8	6 e3.3	108	280	280	10200	74.8	
Amoldura transversal inferior								
	9	6 e3.3	40	390	380	15200	37.6	
	10	6 e3.3	40	390	380	15200	37.6	
				Total+10%			76.0	
Amoldura longitudinal superior								
	11	6 e3.3	46	9	108	13	5980	14.8
	12	6 e3.3	21	13	103	14	130	27.0
	13	6 e3.3	21	13	103	14	130	27.0
	14	6 e3.3	21	13	101	16	2730	6.8
				Total+10%			69.9	
Amoldura transversal superior								
	15	e5	22	10	157	13	3760	6.2
	16	e5	22	10	157	13	3760	6.2
	17	e5	22	10	147	13	3740	5.9
	18	e5	22	10	158	13	3760	6.2
	19	e5	22	13	155	12	3800	6.2
	20	e5	22	13	156	11	3840	6.2
				Total+10%			33.5	
				e±0:		0.0	66.1	
				+e1.3:		28.0	11.7	
				-e1.0:		18.0		
				+e12.5:		17.2		
				Total:		263.2	66.1	



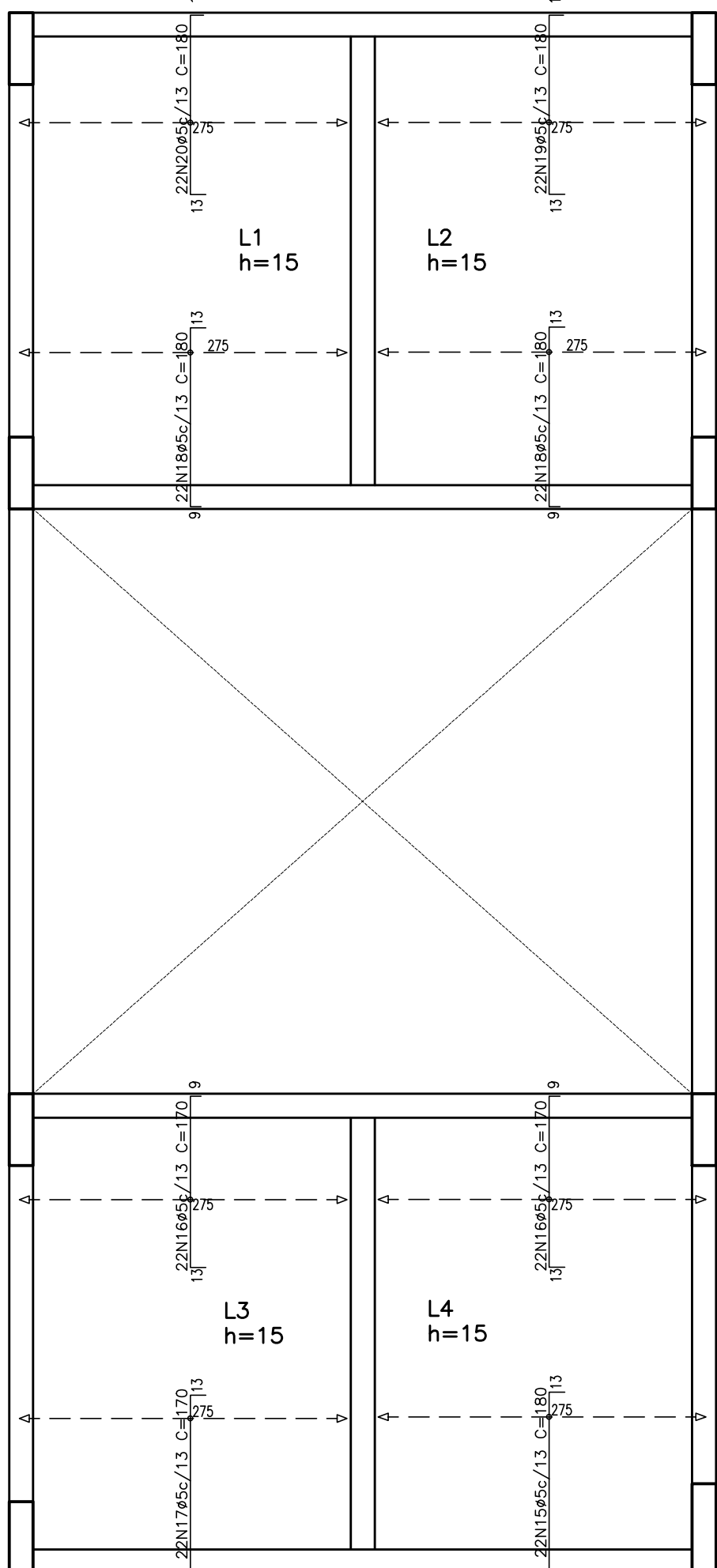
ARMADURA LONGITUDINAL SUPERIOR
PISO CAIXA D'ÁGUA
ESCALA: 1/50



ARMADURA LONGITUDINAL INFERIOR
PISO CAIXA D'ÁGUA
ESCALA: 1/50



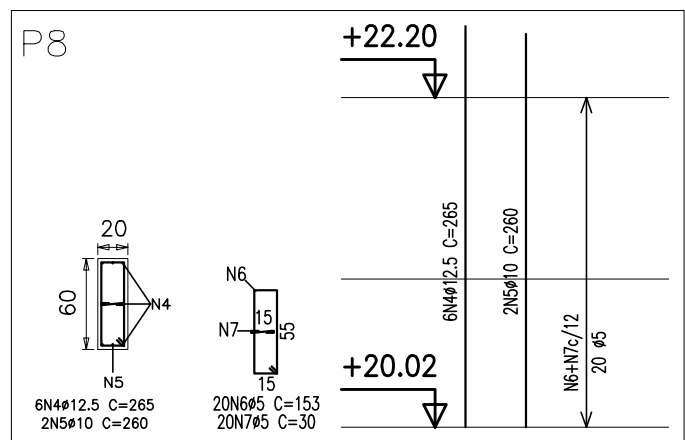
ARMADURA TRANSVERSAL INFERIOR
PISO CAIXA D'ÁGUA



ARMADURA TRANSVERSAL SUPERIOR
PISO CAIXA D'ÁGUA
ESCALA: 1/50

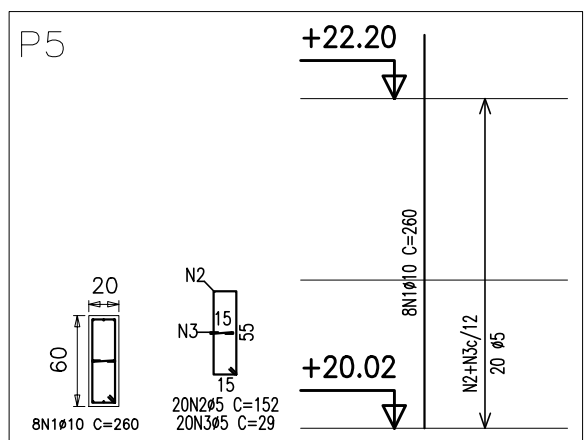
Nota:

Pranchas de referência: 19/64



Pilares que terminam em
PISO CX D'ÁGUA
Concreto: C25, em geral
Aço: CA-50-A e CA-60-B
Escala: 1:50

Resumo Aço PISO CX D'ÁGUA Pilares	Comp. total (m)	Peso+10% (kg)	Total
CA-50-A Ø10	26.0	18	
Ø12.5	15.9	17	35
CA-60-B Ø5	72.8	13	13
Total			48

[illegible]